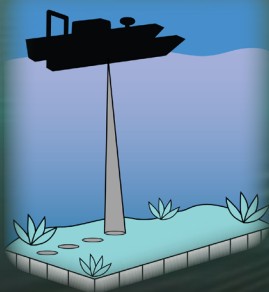


Bathymetric Survey



Single Beam

Single beam echosounders can use multiple frequencies to map in shallow water under 1 ft or water over 3000 ft deep.

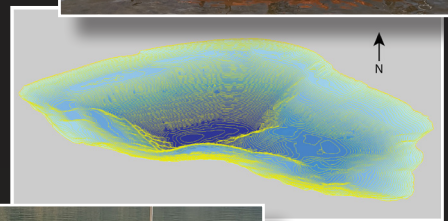
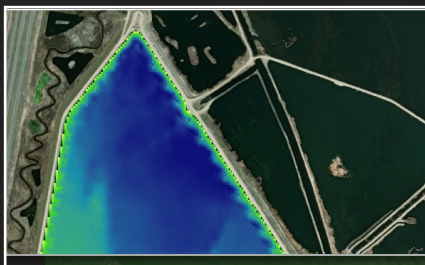
This data provides point returns along a path that can be used to interpolate sub-surface topography to help answer a variety of questions. Our arsenal of transducers range from 450kHz all the way down to 33kHz for the deepest waters.



Side Scan

Side scan sonar is more like a picture from an ultrasound and allows you to see features on the lake bed.

This data is generated from the echo of an acoustic pulse but the beam shape creates a slice of an image instead of a single point. As the USV moves along, these slices build an image. Our 450 kHz transducer set can provide detailed output over a 150m range.



Learn More: appscitec.com & fairweatherit.com